



CROWN IMPERIAL ASSEMBLY INSTRUCTIONS

Single Width Wall Unit



CROWN IMPERIAL ASSEMBLY INSTRUCTIONS

Single Width Wall Unit

Single Width Wall Unit Parts

Parts Supplied



A



B



C



D



E



CROWN IMPERIAL ASSEMBLY INSTRUCTIONS

Single Width Wall Unit

Part Letter	Part Name	Quantity
A	End Panel*	2
B	Shelf	2
C	Top/Bottom Panel	2
D	Back Panel	1
E	Hanging Brackets	1 pair

* NOTE: End Panels are packed separately from all other parts supplied.



CROWN IMPERIAL ASSEMBLY INSTRUCTIONS

Single Width Wall Unit

A 	B 	C 	D 	E
F 	G 	H 	J 	K
L 	M 	N 	P 	Q
R 	S 	T 	U 	
V 	X 		Y 	
W 				



CROWN IMPERIAL ASSEMBLY INSTRUCTIONS

Single Width Wall Unit

Fitting Letter	Fitting Name	Quantity
A	Metal Dowel	8
B	Metal Cam	8
C	Wooden Dowel 8 x 40mm	8
D	Wooden Dowel 5 x 25mm	
E	Connecting Screws (M/F)	2 pairs
F	Black Chipboard Screw 8 x 45mm	
G	Countersunk Screw 8 x 1 ¼"	
H	Countersunk Screw 6 x 5/8"	
J	Countersunk Screw 6 x ½"	
K	Flange Head Screw 6 x ¾"	4
L	Flange Head Screw 6 x 5/8"	
M	Euro Screw 6 x 11mm	
N	Round Head Screw 6 x 5/8"	
P	Shelf Stud	8
Q	Rubber Sleeved Shelf Stud	
R	Angle Bracket	
S	Door Buffer Pad	2
T	5mm Plugs	10
U	35mm Bung	2
V	Crown Conceal Cap	
W	Hanging Plate	2
X	Plinth Clip	
Y	Peg-o-Lock	



CROWN IMPERIAL ASSEMBLY INSTRUCTIONS

Single Width Wall Unit

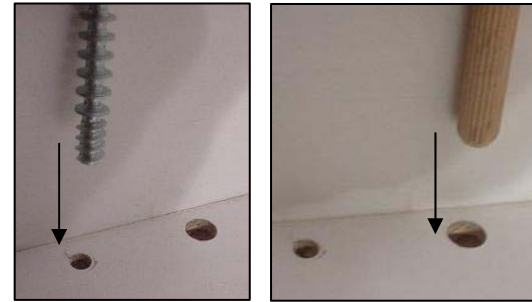
Assembly Instructions

Step 1. Insert fittings into End Panels

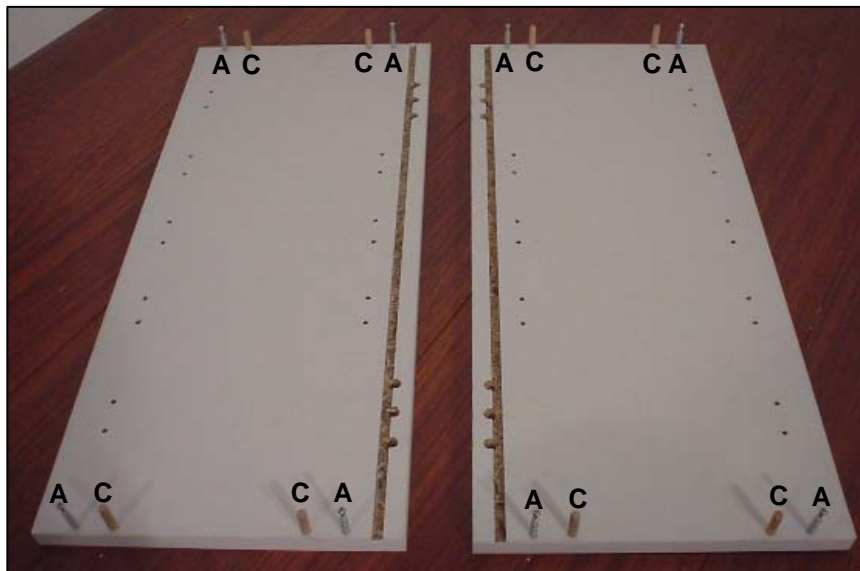
Insert Metal Dowels (fitting A) and Wooden Dowels (fitting C) into the end panel, as shown.

Mirror this for the remaining end panel.

1.1. Insert fittings A and C



1.2. Position of fittings A and C in End Panel





CROWN IMPERIAL ASSEMBLY INSTRUCTIONS

Single Width Wall Unit

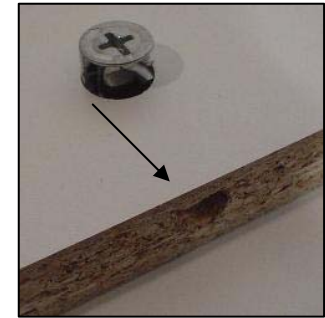
Step 2. Top/Bottom Panel

Insert the Circular Cams (fitting B) into the holes in the top panel.

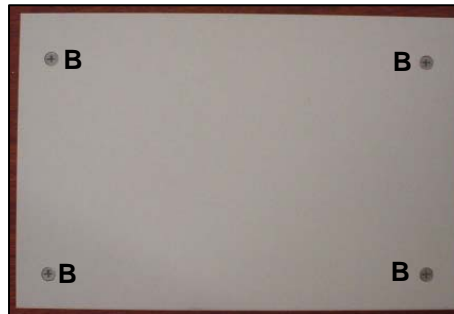
Ensure the arrows on the circular cams, are pointing outwards, towards the pre-drilled edge.

Repeat for the bottom panel.

2.1. Insert fitting B



2.2. Position of fitting B in Top/Bottom Panel



Step 3. Fit Top and Bottom Panels

Step 3.1

Take the top panel and push firmly home onto the end panel, as shown.

Ensure the cams are facing outwards.

3.1. Fit Top Panel to End Panel





CROWN IMPERIAL ASSEMBLY INSTRUCTIONS

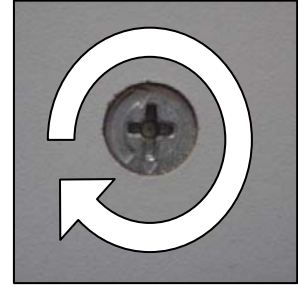
Single Width Wall Unit

Step 3.2

Using a screwdriver, turn the circular cam clockwise to lock.

Repeat for all cams.

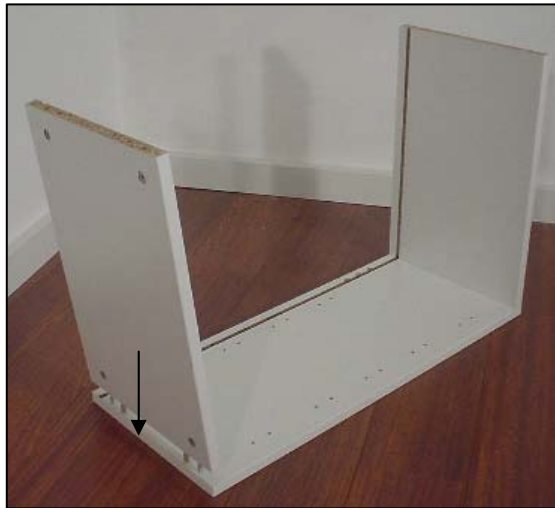
3.2. Lock Cams to secure



Step 3.3

Repeat the above, to fix the bottom panel.

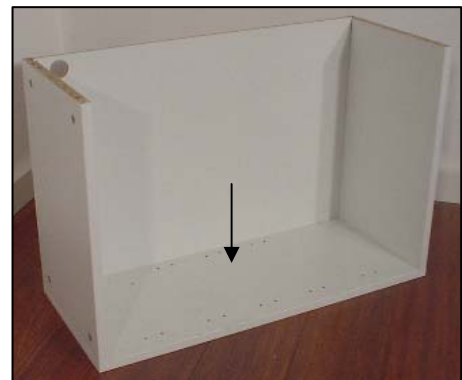
3.3. Repeat to fit Bottom Panel



Step 4. Back Panel

Slide the back panel into the grooves in the top and bottom panels, and push home into the end panel.

4.1. Slide Back Panel into End Panel





CROWN IMPERIAL ASSEMBLY INSTRUCTIONS

Single Width Wall Unit

Step 5. Fit remaining End Panel

Take the remaining end panel and push it firmly home onto the cabinet.

Lock all cams.

5.1. Fit remaining End Panel



Step 6. Fitting Hanging Brackets

Step 6.1

Push the hanging bracket into the pre-drilled holes, located on the back of the end panel, as shown.

6.1. Insert hanging bracket





CROWN IMPERIAL ASSEMBLY INSTRUCTIONS

Single Width Wall Unit

Step 6.2

Secure the hanging bracket, using two screws (fitting M), fixing into the top panel through the pre-drilled holes located at the top of the hanging bracket.

Step 6.3

Repeat this, to attach each hanging bracket to the unit.

Step 6.4 Adjustment Mechanism

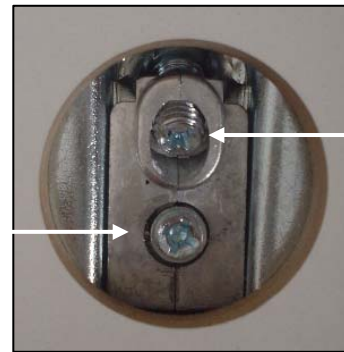
Now look inside the cabinet. Located in the holes found in the back panel are two adjustment mechanisms.

- Upper hanging bracket screw for height adjustment,
- Lower screw for pulling the cabinet tight into the wall.

6.2. Fix hanging bracket



6.4.



Height Adjustment

Locking Screw



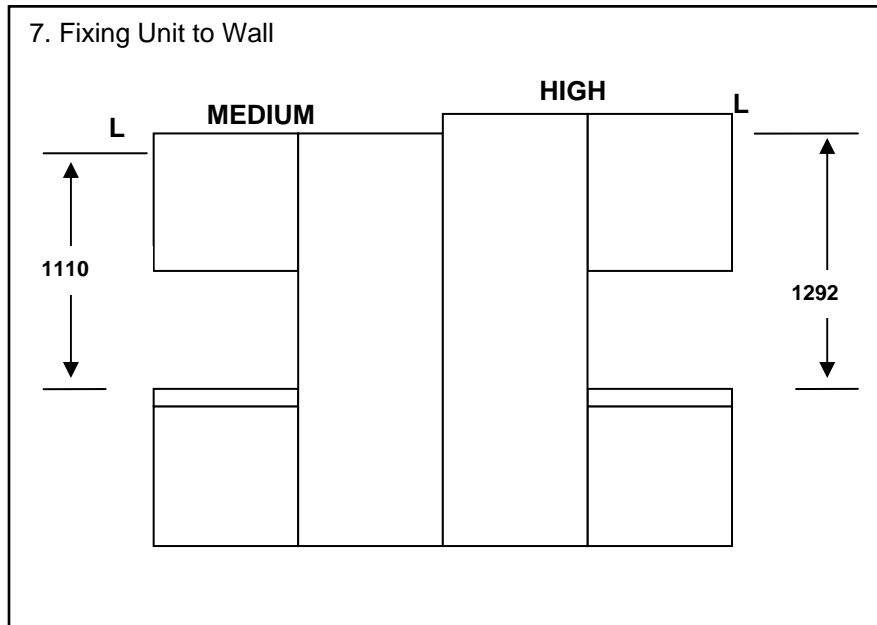
CROWN IMPERIAL ASSEMBLY INSTRUCTIONS

Single Width Wall Unit

Step 7. Fixing the Wall Units to the wall

Fix the hanging plates L at the heights as shown.

The dimensions provided are from the top of the worktop (assuming 40mm thick worktop) to the underneath edge of the hanging plate.



Step 8. Shelving

NOTE: Shelving is optional.

When the cabinet is installed, position shelves accordingly. Using four shelf studs (fitting N) position the shelf at the height desired.

Repeat this, if extra shelving is required.



CROWN IMPERIAL ASSEMBLY INSTRUCTIONS

Single Width Wall Unit

Complete Wall Unit

