



CROWN IMPERIAL ASSEMBLY INSTRUCTIONS

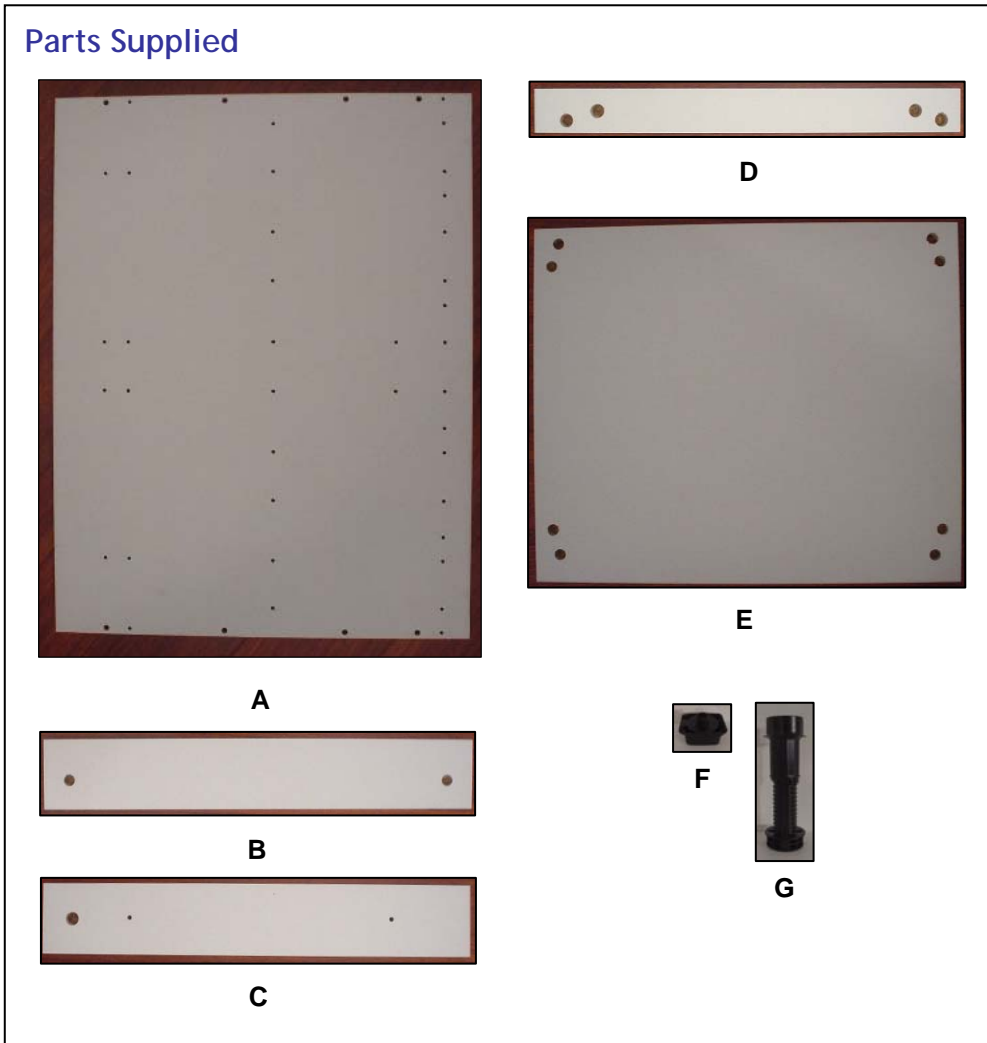
Under Oven Unit



CROWN IMPERIAL ASSEMBLY INSTRUCTIONS

Under Oven Unit

Under Oven Unit Parts





CROWN IMPERIAL ASSEMBLY INSTRUCTIONS

Under Oven Unit

Part Letter	Part Name	Quantity
A	End Panel*	2
B	Top Rail	2
C	Support Rail	2
D	Base Rail	2
E	Bottom Panel	1
F	Feet Block	4
G	Adjustable Feet	4

** NOTE: End Panels are packed separately to all other parts supplied.*



CROWN IMPERIAL ASSEMBLY INSTRUCTIONS

Under Oven Unit

A 	B 	C 	D 	E
F 	G 	H 	J 	K
L 	M 	N 	P 	Q
R 	S 	T 	U 	
V 	X 		Y 	
W 				



CROWN IMPERIAL ASSEMBLY INSTRUCTIONS

Under Oven Unit

Fitting Letter	Fitting Name	Quantity
A	Metal Dowel	14
B	Metal Cam	14
C	Wooden Dowel 8 x 40mm	8
D	Wooden Dowel 5 x 25mm	
E	Connecting Screws (M/F)	3 pairs
F	Black Chipboard Screw 8 x 45mm	
G	Countersunk Screw 8 x 1 ¼"	4
H	Countersunk Screw 6 x 5/8"	8
J	Countersunk Screw 6 x ½"	
K	Flange Head Screw 6 x ¾"	
L	Flange Head Screw 6 x 5/8"	
M	Euro Screw 6 x 11mm	
N	Round Head Screw 6 x 5/8"	
P	Shelf Stud	
Q	Rubber Sleeved Shelf Stud	
R	Angle Bracket	
S	Door Buffer Pad	4
T	5mm Plugs	
U	35mm Bung	
V	Crown Conceal Cap	
W	Hanging Plate	
X	Plinth Clip	2
Y	Peg-o-Lock	



CROWN IMPERIAL ASSEMBLY INSTRUCTIONS

Under Oven Unit

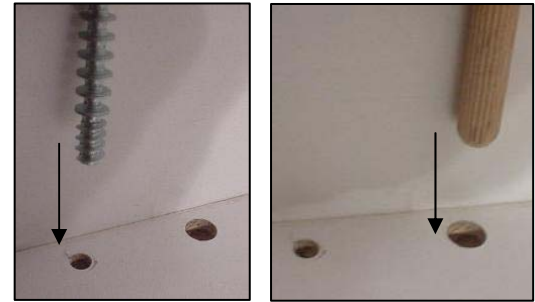
Assembly Instructions

Step 1. Insert fittings into End Panels

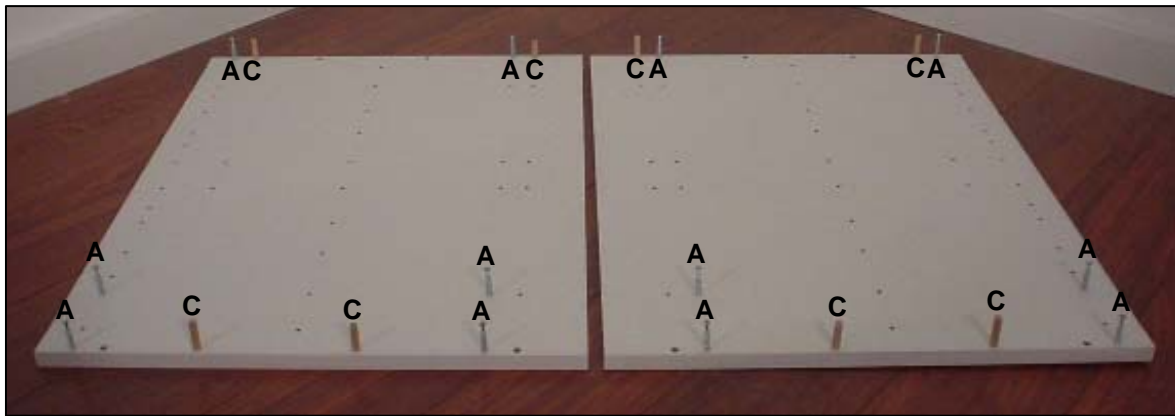
Insert Metal Dowels (fitting A) and Wooden Dowels (fitting C) into the end panel, as shown.

Mirror this for the remaining end panel.

1.1. Insert fittings A and C



1.2. Positions of fittings A and C on End Panels



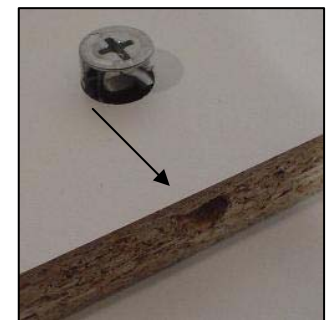
Step 2. Top Rail

Insert the Circular Cams (fitting B) into the holes in the top rail.

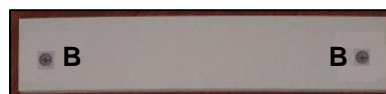
Ensure the arrows on the circular cams, are pointing outwards, towards the pre-drilled edge.

Repeat for the remaining top rail.

2. Insert fitting B



2.2. Position of fitting B in Top Rail





CROWN IMPERIAL ASSEMBLY INSTRUCTIONS

Under Oven Unit

Step 3. Fit Top Rails to End Panel

Step 3.1

Take a top rail and push firmly home onto the end panel, as shown.

Ensure the cams are facing outwards.

3.1. Fit Top Rails to End Panel

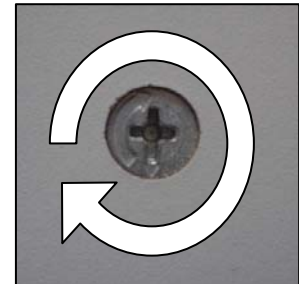


Step 3.2

Using a screwdriver, turn the circular cam clockwise to lock.

Repeat for all cams.

3.2. Lock Cams to secure

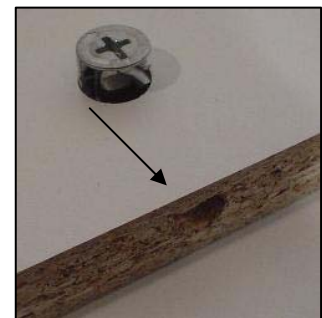


Step 4. Bottom Panel

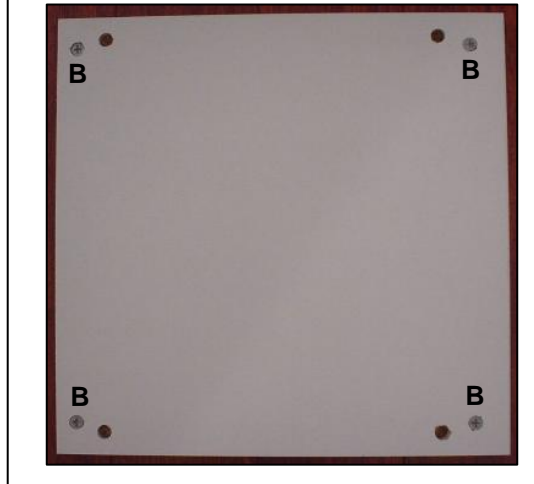
Insert the Circular Cams (fitting B) into the holes in the bottom panel.

Ensure the arrows on the circular cams, are pointing outwards, towards the pre-drilled edge.

4. Insert fitting B



4.1. Position of fitting B in Bottom Panel



Step 5. Fit Bottom Panel to End Panel

Step 5.1

Take the bottom panel and push firmly home onto the end panel, as shown.

Ensure the cams are facing outwards.

5.1. Fit Bottom Panel to End Panel





CROWN IMPERIAL ASSEMBLY INSTRUCTIONS

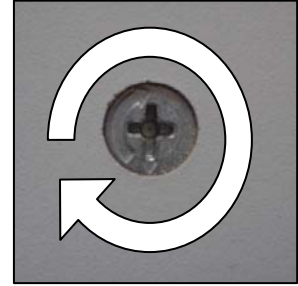
Under Oven Unit

Step 5.2

Using a screwdriver, turn the circular cam clockwise to lock.

Repeat for all cams.

5.2. Lock Cams to secure



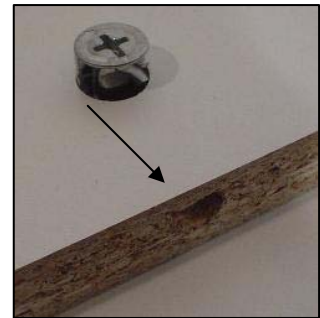
Step 6. Base Rail

Insert the Circular Cams (fitting B) into the holes in the base rails.

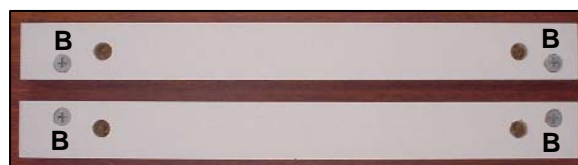
Ensure the arrows on the circular cams, are pointing outwards, towards the pre-drilled edge.

Repeat for the remaining base rail.

6. Insert fitting B



6.2. Position of fitting B in Base Rail





CROWN IMPERIAL ASSEMBLY INSTRUCTIONS

Under Oven Unit

Step 7. Fit Base Rail to End Panel

Step 7.1

Take a base rail and push firmly home onto the end panel, as shown.

Ensure the cams are facing outwards.

7.1. Fit Base Rail to End Panel

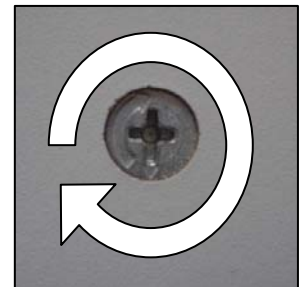


Step 7.2

Using a screwdriver, turn the circular cam clockwise to lock.

Repeat for all cams.

7.2. Lock Cams to secure





CROWN IMPERIAL ASSEMBLY INSTRUCTIONS

Under Oven Unit

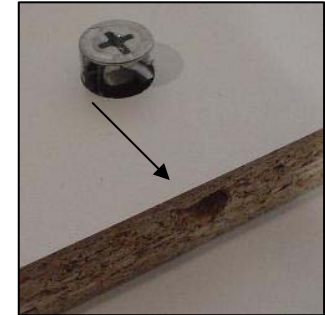
Step 8. Support Rail

Insert the Circular Cams (fitting B) into the holes in the support rail.

Ensure the arrows on the circular cams, are pointing outwards, towards the pre-drilled edge.

Repeat for the remaining support rail.

8.1. Insert fitting B



8.2. Position of fitting B in Support Rail



Step 9. Fit Support Rail to End Panel

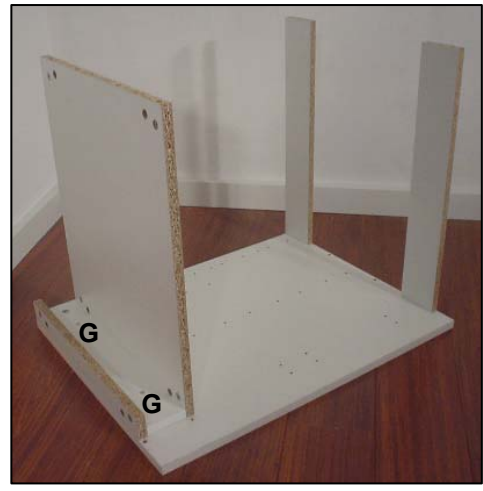
Step 9.1

Take a support rail and push firmly home onto the end panel, as shown.

Ensure the cam is at the front edge and the rail is flush with the front of the end panel.

Secure using two screws (fitting G), as shown.

9.1. Fit Support Rail to End Panel





CROWN IMPERIAL ASSEMBLY INSTRUCTIONS

Under Oven Unit

Step 10. Fit remaining End Panel
Push the remaining end panel, firmly home onto the cabinet.

Lock all cams.

10.1. Fit remaining End Panel



Step 11. Fit remaining Base and Support Rails

Step 11.1
Repeat Step 7 to fit the remaining Base Rail.

Step 11.2
Repeat Step 9 to fit the remaining Support Rail.

11.1. Fit remaining Base Rail



11.2. Fit remaining Support Rail





CROWN IMPERIAL ASSEMBLY INSTRUCTIONS

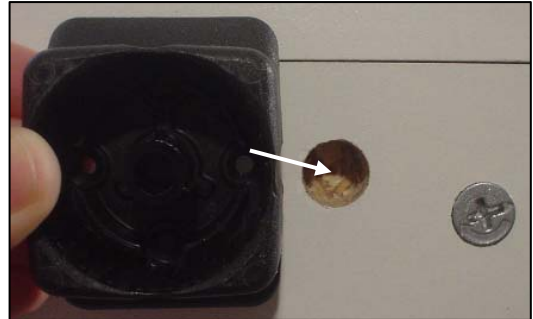
Under Oven Unit

Step 12. Fitting Feet

Step 12.1 Attaching the Foot Blocks

On the base rail of the cabinet, locate the foot blocks with the flange facing the edge of the cabinet and push home, as shown.

12.1 Fix in Foot Blocks



Step 12.2 Securing Foot Blocks

To secure the foot blocks, hit the spigots 'X' with a hammer, as shown, taking care not to damage the surround.

Using two countersunk screws (fitting H), per block, secure further.

12.2 Secure Foot Blocks



Step 12.3 Push Feet into Foot Blocks

Push the adjustable feet, into the foot blocks. Adjust the height of the feet by turning them.

There is a sequence of numbers written on the feet to aid adjusting all feet to the same height.

Repeat for all four feet.

12.3 Fit Feet and Adjust Height





CROWN IMPERIAL ASSEMBLY INSTRUCTIONS

Under Oven Unit

Complete Under Oven Unit

