



CROWN IMPERIAL ASSEMBLY INSTRUCTIONS

Low Larder Unit



CROWN IMPERIAL ASSEMBLY INSTRUCTIONS

Low Larder Unit

Low Larder Parts

Parts Supplied



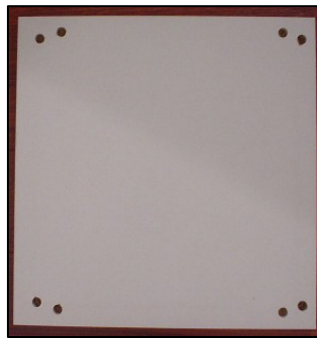
A



C



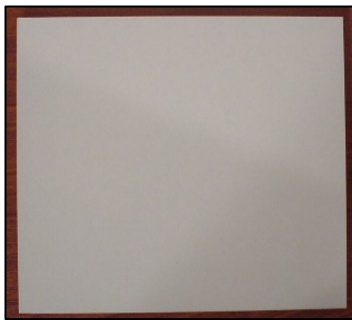
E



D



F



B



G



H



CROWN IMPERIAL ASSEMBLY INSTRUCTIONS

Low Larder Unit

Part Letter	Part Name	Quantity
A	End Panel*	2
B	Optional Shelf	3
C	Fixed Shelf	1
D	Top/Bottom Panel	2
E	Small Back Panel	1
F	Large Back Panel	1
G	Feet Blocks	4
H	Adjustable Feet	4

** NOTE: End Panels are packed separately from all other parts supplied.*



CROWN IMPERIAL ASSEMBLY INSTRUCTIONS

Low Larder Unit

A 	B 	C 	D 	E
F 	G 	H 	J 	K
L 	M 	N 	P 	Q
R 	S 	T 	U 	
V 	X 		Y 	
W 				



CROWN IMPERIAL ASSEMBLY INSTRUCTIONS

Low Larder Unit

Fitting Letter	Fitting Name	Quantity
A	Metal Dowel	22
B	Metal Cam	22
C	Wooden Dowel 8 x 40mm	8
D	Wooden Dowel 5 x 25mm	
E	Connecting Screws (M/F)	3 pairs
F	Black Chipboard Screw 8 x 45mm	3
G	Countersunk Screw 8 x 1 ¼"	
H	Countersunk Screw 6 x 5/8"	8
J	Countersunk Screw 6 x ½"	
K	Flange Head Screw 6 x ¾"	
L	Flange Head Screw 6 x 5/8"	
M	Euro Screw 6 x 11mm	
N	Round Head Screw 6 x 5/8"	
P	Shelf Stud	12
Q	Rubber Sleeved Shelf Stud	
R	Angle Bracket	
S	Door Buffer Pad	8
T	5mm Plugs	50
U	35mm Bung	
V	Crown Conceal Cap	
W	Hanging Plate	
X	Plinth Clip	2
Y	Peg-o-Lock	



CROWN IMPERIAL ASSEMBLY INSTRUCTIONS

Low Larder Unit

Assembly Instructions

Horizontals required from Broom Larder Pack

The Low Larder Unit is constructed using the two Bottom (Top) Panels and two Large Back Panels from the Broom Larder horizontal Pack.

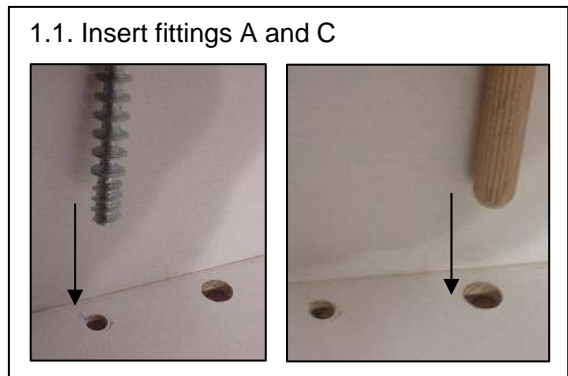
The Fixed Shelf and Loose Shelves are both optional, and can be installed where appropriate.

All other components can be discarded.

Step 1. Insert fittings into End Panels

Insert Metal Dowels (fitting A) and Wooden Dowels (fitting C) into the end panel, as shown.

NOTE: End Panels with this pack are **not** universal; there is a Left End Panel and Right End Panel.



1.2. Positions of fittings A and C on End Panels



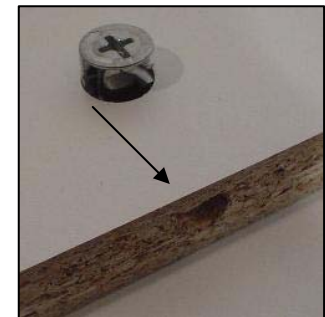
Step 2. Top/Bottom Panel

Insert the Circular Cams (fitting B) into the holes in the top panel.

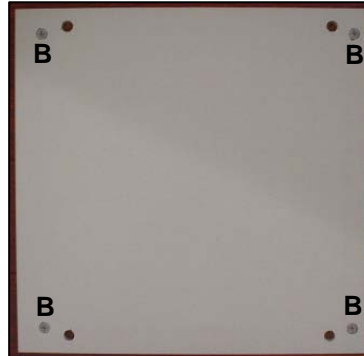
Ensure the arrows on the circular cams, are pointing outwards, towards the pre-drilled edge.

Repeat for the bottom panel.

2. Insert fitting B



2.2. Position of fitting B in Top/Bottom Panels



Step 3. Fit Top and Bottom Panels

Step 3.1

Take the top panel and push firmly home onto the end panel, as shown.

Ensure the cams are facing outwards.

3.1. Fit Top Panel to End Panel

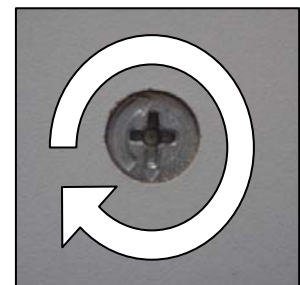


Step 3.2

Using a screwdriver, turn the circular cam clockwise to lock.

Repeat for all cams.

3.2. Lock Cams to secure



Step 3.3

Repeat the above, to fix the bottom panel.

3.3. Repeat to fit Bottom Panel



Step 4. Adding Fixed Shelving (Optional)

The fixed shelves can be identified by the three small holes drilled right through, near one edge. This edge should be kept to the front.

To fit, repeat as above.

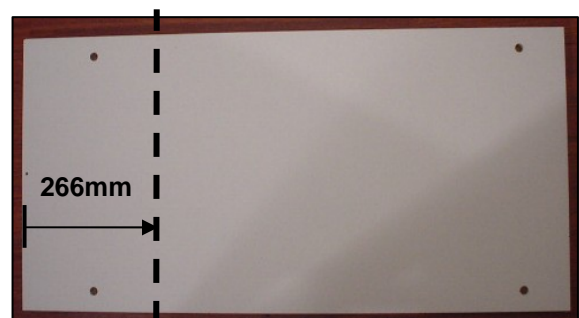
NOTE: Two Metal Dowels (fitting A) will need to be added, on each End Panel at the height you wish the fixed shelf to sit at. When fitting, ensure cams are facing downwards.

Step 5. Back Panel

One Large Back Panel will need to be reduced in length to **266mm**. This should be measured from the end with one small hole drilled through the panel, as shown.

It is suggested that this panel be fixed as the higher back panel of the Unit.

5. Cut one large Back Panel





CROWN IMPERIAL ASSEMBLY INSTRUCTIONS

Low Larder Unit

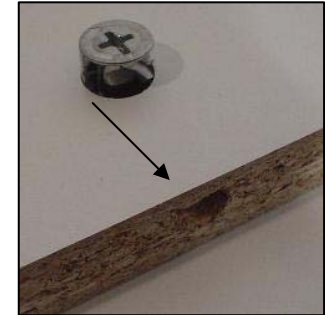
Step 6. Back Panels

Once the back panel is cut, insert the Circular Cams (fitting B) into the holes in the top panel.

Ensure the arrows on the circular cams, are pointing outwards, towards the pre-drilled edge.

Repeat for the remaining large back panel.

6. Insert fitting B



6.2. Position of fitting B in both large Back Panels and the smaller Back Panel



Step 7. Fit both Back Panels

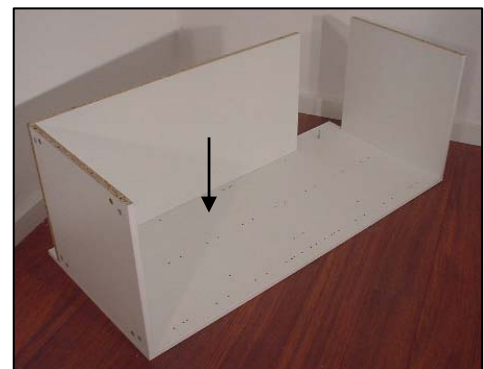
Step 7.1

Take the large back panel and push firmly home onto the end panel, as shown.

Ensure this back panel is placed at the bottom of the unit.

Ensure the cams are facing outwards.

7.1. Fit large Back Panel





CROWN IMPERIAL ASSEMBLY INSTRUCTIONS

Low Larder Unit

Step 7.2

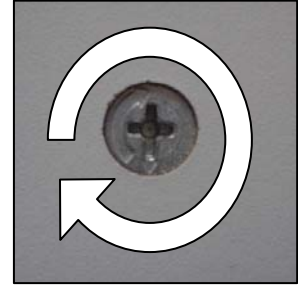
Using a screwdriver, turn the circular cam clockwise to lock.

Repeat for all cams.

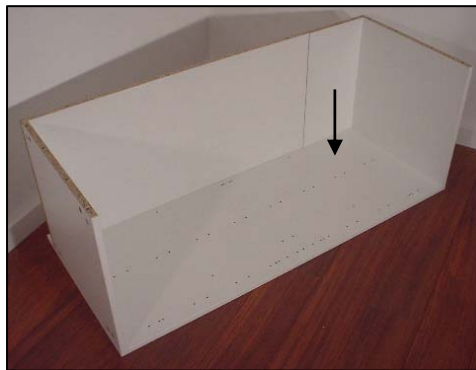
Step 7.3

Repeat to fit the reduced back panel.

7.2. Lock Cams to secure



7.3. Fit smaller Back Panel



Step 8. Secure Back Panels

Secure both of the back panels, using two screws (fitting K) and fixing through the back panels into the top and bottom panels.

8. Secure both Back Panels





CROWN IMPERIAL ASSEMBLY INSTRUCTIONS

Low Larder Unit

Step 9. Fit remaining End Panel

Push the remaining end panel, firmly home onto the cabinet.

Lock all cams.

9.1. Fit remaining End Panel to Cabinet

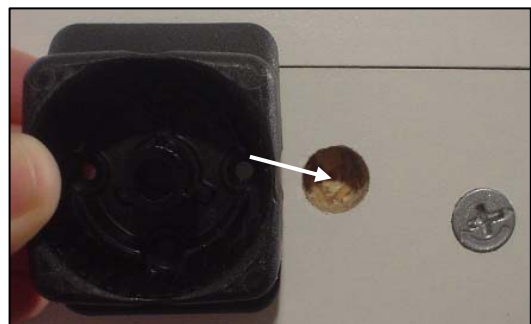


Step 10. Fitting Feet

Step 10.1 Attaching the Feet Blocks

On the bottom panel of the cabinet, locate the feet blocks with the flange facing the edge of the cabinet and push home.

10.1 Fix in Feet Blocks





CROWN IMPERIAL ASSEMBLY INSTRUCTIONS

Low Larder Unit

Step 10.2 Securing Feet Blocks

To secure the feet blocks, hit the spigots 'X' with a hammer, as shown, taking care not to damage the surround.

Using two countersunk screws (fitting H), per block, secure further.

10.2 Secure Feet Blocks



Step 10.3 Push Feet into Feet Blocks

Push the adjustable feet, into the feet blocks. Adjust the height of the feet by turning them.

There is a sequence of numbers written on the feet to aid adjusting all feet to the same height.

Repeat for all four feet.

10.3 Fit Feet and Adjust Height



Step 11. Shelving

NOTE: Shelving is optional.

When the cabinet is installed, position shelves accordingly. Using four shelf studs (fitting N) position the shelf at the height desired.

Repeat this, if extra shelving is required.



CROWN IMPERIAL ASSEMBLY INSTRUCTIONS

Low Larder Unit

Complete Low Larder Unit

